

Well, where is it?

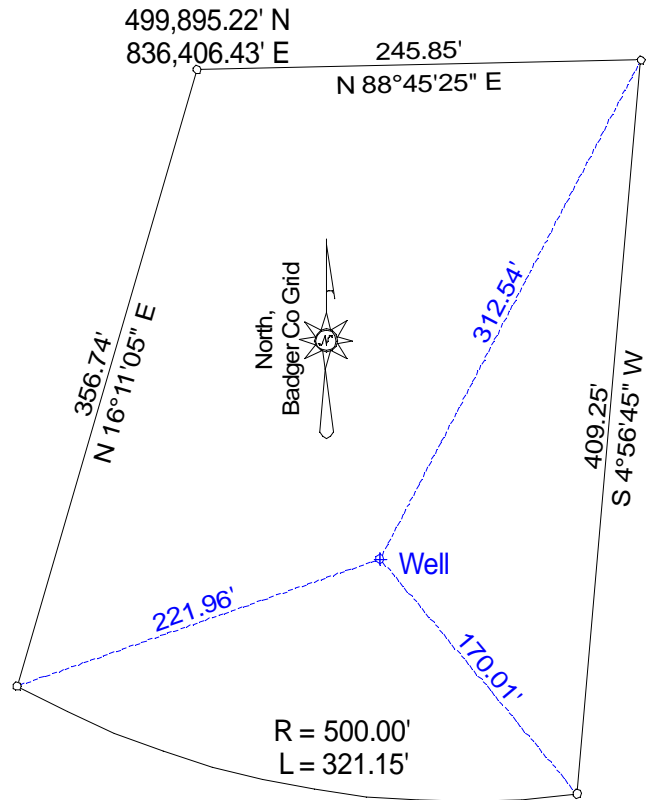
One of your survey crews was to determine coordinates of a potential well site on a lot you personally surveyed a few weeks ago. They set up at the proposed location and, as it was at the end of a long day, quickly shot distances to three of the four lot corners (the fourth would have required some brushing).

Being in a hurry, they didn't repeat their measurements (I mean, geez, they were using an *expensive* total station) or even fire up the data collector, just recorded the distances on a scrap of paper the instrument operator happened to have in his pocket.

The map summarizes lot dimensions and their measurements. The coordinates for the NW lot corner are in the Badger County Grid.

It wasn't until they tried computing the well position the next day that they realized something was wrong.

They checked with you and verified that:
(1) the lot exterior had been surveyed and the data they were provided was correct, and,
(2) they had used the correct lot corners.



Considering the job site is 53 miles away and the well driller is chomping at the bit, you've been asked to apply your extensive analytic skills to determine the correct Badger County Grid coordinates of the well location. What are the coordinates to the nearest 0.1 ft? Assume ground and grid distances are the same.